



Itinerary

Prepared for: East, Southwest & West Family Tour

Prepared by: Aidan Hanrahan

5 July 2024

Proposal number: 001

EXECUTIVE TOUR SUMMARY

Arrive and Depart from Dublin Airport

Day 1 - Arrive Dublin Airport (Dublin)

Arrive at Dublin Airport and meet your chauffeur guide.

Day 2 - Dublin City Day Tour (Dublin)

Touring Trinity College, St Patricks Cathedral, National Museum of Archaeological & History, National Gallery of Ireland, Kilmainham Gaol and Guinness Storehouse.

Day 3 - Castle Day Tour (Dublin to Kinsale)

Touring Rock of Cashel & Blarney Castle (Kiss the Blarney Stone) & Jameson Experience at Middleton Distillery.

Day 4 - Touring West Cork & Killarney National Park (Kinsale to Killarney)

Touring Charles Fort, Franciscan friary of Timoleague, Clonakilty, Drombeg Stone Circle, Glandore, Union Hall, Bantry House & Gardens, Kenmare and Ladies View.

Day 5 - Touring Ring of Kerry (Killarney)

Touring off the beaten track tour to Valentia Island, Kerry Cliffs and Skellig Michael, Staigue Fort, Derrynane House, Muckross House & Gardens and Ross Castle.

Day 6 - Touring Dingle Peninsula (Killarney)

Touring Dingle Town (Dingle Crystal, Dingle Aquarium & Dingle Distillery) & Sleah Head Ring (Beehive Huts, The Basket Centre, Gallarus Oratory & Kilmalkedar Church).

Day 7 - Touring Cliffs of Moher & Burren (Killarney to Galway)

Touring Cliffs of Moher, traditional music town of Doolin, The Burren and Poul nabrone Portal Dolmen Tomb.

Day 8 - Touring Galway City & Clonmacnoise (Galway to Dublin)

Partake in Ashford Castle activities in the morning. Tour Galway City of Tribes (Shop Street, Quay Street and the Spanish Arch) and Clonmacnoise.

Day 9 - Depart Dublin Airport

Depart hotel via complementary airport shuttle bus to Dublin Airport for your flight

TRANSPORT

17 x People - 7 x Days Chauffeured Guided Tour & Transfers in Deluxe Mercedes Bus with leather trim, wifi and air con. Fuel, Tolls, Ferry crossings and driver/guide expenses all included. Your knowledgeable chauffeur will guide you to the best restaurants and local bars as well as informing you on all the historical facts and fables.

ACCOMMODATION

Accommodation is 4 Star Hotel Accommodation including a 4 Star Castle stay.

4 STAR ACCOMMODATION

2 x Nights @ Buswells Hotel, Dublin. 5 x Classic Double Rooms, 1 x Classic Twin Room, 1 x Classic Triple Room & 1 x Classic Single Room Located on a quiet street just a short stroll to all of Dublin Cities best sites. Enjoy a stroll around St. Stephens Green, located just 2 minutes walk from Buswells or venture to Merrion Square, 6 minutes walk, for one of the many outdoor events held throughout the year. Once you enter the doors of Buswells, you will find yourself in an elegant, charming hotel where you can relax and enjoy your trip to Dublin without ever being far from the action. Our friendly and experienced team will be delighted to guide you and ensure you don't miss any of Dublin's 'Best Bits' during your stay.

1 x Night @ Kinsale Hotel & Spa, Kinsale, Co. Cork. 4 x Classic Double Rooms, 1 x Classic Family Room, 1 x Classic Triple Room & 1 x Classic Single Room Set in 90 acres of mature wooded parkland and offering panoramic views over Oysterhaven Bay, our luxury hotel in Kinsale is situated in the perfect location near Cork City, in a peaceful and tranquil setting for our guests. The Kinsale Hotel & Spa boasts a selection of contemporary accommodation on the dramatic setting of Kinsale's rugged coastline. Located just a short 5 minute drive from the historic, harbour town of Kinsale, this hotel provides a tranquil haven on the coast.

2 x Nights @ Arbutus Hotel, Killarney, Co. Kerry. 5 x Classic Double Rooms, 1 x Classic Twin Room, 1 x Classic Triple Room & 1 x Classic Single Room If you are seeking an utterly unique experience, genuine Irish hospitality and a hotel with character, the Arbutus Hotel is for you. Established in 1926 a proud family tradition of extending the warmest of welcomes to the Arbutus Hotel and Killarney is ongoing. Perfectly situated amongst the shops, pubs and restaurants of Killarney town centre. Each room has an individual charm, blending antique pieces with contemporary comforts to create a haven of peace and relaxation. Enjoy a drink, a chat and maybe a bit of music in Buckley's Bar.

1 x Night @ Ballyseede Castle Hotel, Tralee, Co. Kerry. 6 x Classic Double Rooms, 1 x Classic Twin Room & 2 x Classic Single Rooms Take a step back in time with a castle steeped in history that offers luxurious surroundings within 30 acres of private gardens and woodland. The Doric columns that lead to an elegant oak staircase in the lobby are indicative of the grand decoration throughout the castle hotel. Fine dining with traditional Irish cuisine, rooms that tell a story and the picturesque natural setting, will all comprise to make your stay at Ballyseede Castle an unforgettable one.

1 x Night @ The Park House Hotel, Galway. 4 x Classic Double Rooms, 1 x Junior Suite Family Room, 1 x Classic Triple Room & 1 x Classic Single Room The Park House Hotel is recognised for excellence in both food and accommodation, and is acknowledged locally and from an unrivalled online reputation as one of Galway's top hotels. Centrally located close to Eyre Square enjoy all that Galway has on offer.

1 x Night @ Clayton Dublin Airport Hotel, Dublin. 4 x Classic Double Rooms, 1 x Classic Family Room, 1 x Classic Triple Room & 1 x Classic Single Room Conveniently located near Dublin Airports Terminal 1 and 2 and on the periphery of Dublin city, Clayton Hotel Dublin Airport is the ideal stopover choice for visitors flying into or out of Dublin.

PROJECTED COST

Description	Days	Cost
ACCOMMODATION	8	€ 19,240
TRANSPORT	8	€ 8,100
Total		€ 28,040
Deposit (to be paid)		€ 6,300

Terms & Conditions

Price based on 17 people. Costs may fluctuate upon the time of year and numbers. Availability cannot be guaranteed on all accommodations.

Deposit required to secure the booking of Accommodation and Transport. Non refundable upon payment. Full payment of tour required 1 month in advance of the tour date. Non refundable upon payment.

Please note Accommodation includes Bed & Breakfast only.

There is a surcharge for the extra use of a pull out bed for double rooms at accommodations i.e. couple plus 1 and a half year old can use cot complimentary but surcharge on use of a pull out bed.

All lunch and evening meals are not included, but the finalised itinerary will have suggested local restaurants.

Activity costs are not included unless requested.

It is advised to take out travel insurance to cover every eventuality.

Tips are not included but encouraged.

TOURING

Day 1 - Dublin City Day Tour (Dublin)

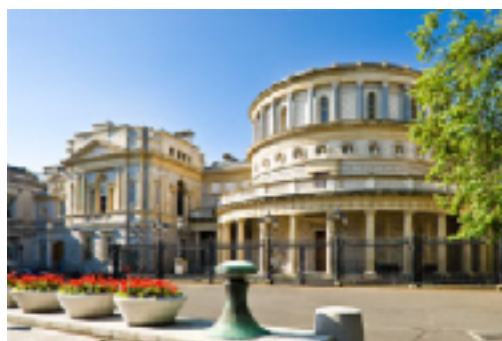
Arrive at Dublin Airport on morning flight arrival to be greeted by your chauffeured tour guide at arrivals in Airport.

Accommodation: 4 Star Buswells Hotel, Dublin

Day 2 - Dublin City Day Tour (Dublin)

Tour of Dublin City including Trinity College, St Patricks Cathedral, National Museum of Archaeological & History, National Gallery of Ireland, Kilmainham Jail and Guinness Storehouse.

Tour of **Trinity College** which is widely considered to be the most prestigious University in Ireland and amongst the most elite in Europe. It houses The Library and the Book of Kells. Trinity College boasts the most extensive Library in Ireland which is a legal deposit Library for Ireland and The United Kingdom containing over 6.2 million printed volumes and significant quantities of manuscripts. The Book of Kells is the centrepiece of an exhibition which attracts over 500,000 visitors to Trinity College in Dublin City each year. It is Ireland's greatest cultural treasure and the world's most famous medieval manuscript. Written around the year 800 AD, the Book of Kells contains a richly decorated copy of the four gospels in a Latin text.



Tour of the **National Museum of Ireland-Natural History**, on Merrion Street in Dublin, has galleries of animals from Ireland and overseas, as well as geological exhibits from a total collection of about two million scientific specimens. Just two years before Charles Darwin published his famous work, 'The Origin of Species', the Natural History Museum in Merrion Street was opened to the public for the first time in 1857. Now, as then, it educates and inspires, leaving us feeling small and humbled amidst the vast and wondrous diversity of life on display. Tour of the **National Museum of Ireland - Archaeology**, on Kildare Street in Dublin, which first opened its doors in 1890 and since then it has been filling in the blanks for us through its extensive archaeological collections. Take time at The Treasury which features outstanding examples of Celtic and Medieval art, such as the famous Ardagh Chalice, the Tara Brooch and the Derrynaflan Hoard. Gaze in wonder at the finest collection of prehistoric gold artefacts in Europe, which is to be found in Or, Ireland's Gold. Ramble through prehistoric Ireland and experience life at the same time of the Vikings in Viking Age Ireland. Medieval Ireland 1150-1550, documents life in Ireland in the age of cathedrals, monasteries and castles.



Tour of **Saint Patrick's Cathedral** which has been part of Ireland's history for over 800 years and today is one of the most popular visitor attractions in Dublin. Built in honour of Ireland's patron saint between 1220 and 1260 Saint Patrick's Cathedral offers visitors a rich and compelling cultural experience and is one of the few buildings left from medieval Dublin. It is the National Cathedral of the Church of Ireland and is the largest Cathedral in the country. Guided tours of the Cathedral happen regularly throughout the day or a free App can be used for self-guide purpose.

Tour of the **National Gallery of Ireland** in Dublin boasts some 2,500 paintings and approximately 10,000 other works in different media including water-colours, drawings, prints and sculpture. Every major European school of painting is extensively represented. It also houses a renowned collection of Irish paintings, the majority of which are on permanent display. The gallery was established by an Act of Parliament in 1854 and first opened its doors to the public in January 1864.



Tour of **Kilmainham Gaol**, which is the Irish word for Jail. Before its closure in 1924, Dublin's Kilmainham Gaol held some of the most famous political and military leaders in Irish history such as Robert Emmet, Charles Stewart Parnell, the 1916 Rising leaders and Eamon de Valera. Leaders of the rebellions of 1798, 1803, 1848, 1867 and 1916 were detained here. The visit includes a guided tour and exhibition, it gives the visitor a dramatic and realistic insight into what it was like to have been confined in one of these forbidding bastions of punishment and correction between 1796 when it opened and 1924 when it closed.

Tour of the **Guinness Storehouse** located in the heart of the St James's Gate Brewery, which has been home to the world famous stout since 1759. Ireland's number one International Visitor Attraction, the Guinness Storehouse is the Home of Guinness, where you will discover what goes into the making of each and every pint, and learn about the incredible brand history stretching over 250 years. The highlight for many visitors is the Gravity Bar, symbolically the 'Head of the Pint', where visitors can enjoy unparalleled panoramic views of Dublin city – views that are all the better with a complimentary pint in hand.



Accommodation: 4 Star Buswells Hotel, Dublin

Day 3 - Castle Day Tour (Dublin to Kinsale)

Depart Dublin and travel to tour the Rock of Cashel, Blarney Castle (Kiss the Blarney Stone) & Jameson Experience at Middleton Distillery.



Depart Dublin and travel via the **Rock of Cashel** for a tour. The Rock of Cashel is one of Ireland's most visited sites, and is a spectacular and archaeological site. A collection of medieval ecclesiastical buildings set on an outcrop of limestone in the Golden Vale. The 12th-century round tower is of the oldest surviving building on the Rock, also include a high cross, and the ruins Romanesque chapel - Cormac's Chapel is one of the earliest, and finest churches built in the Romanesque style. The 13th-century Gothic cathedral is a large cruciform Gothic church without aisles built between 1230 and 1270. Also a 15th-century castle and the Hall of the Vicars is the entry point to the ecclesiastical enclosure. The Hall houses the museum where the original Cross of St. Patrick can be found.

Travel onwards to Blarney to tour **Blarney Castle and Gardens**.

The historic Blarney Castle near Cork City is perhaps most famous for the Blarney Stone but it's also a great destination for the whole family. According to legend, the stone has the power to give anyone who kisses it the 'gift of the gab' (or the ability to be a smooth talker), so for those who dare, a climb to the battlements to reach the famous stone could be well worth it. For a more relaxing experience, take a stroll through the Blarney Castle Gardens and Rock Close—an attractive destination in their own right.



Travel onwards to visit the **Jameson Experience in Middleton**, in East Cork which is to take a leap through history. Step through the doors and you'll step back in time—carts are piled high with sacks of grain and you can smell the malted barley drying in closed kilns. Thousands of casks housing ageing whiskey are on show, as well as original kilns and the largest pot still in the world. You'll learn about "the angel's share" (the amount of alcohol that evaporates from the cask during maturation) and the fascinating story behind the creation of one of the most well-known Irish whiskeys in the world. Visitors are guided through the distillery scene, while selected volunteers are offered the chance to take part in a whiskey tasting that will demonstrate the differences

between Scotch, American and Irish whiskey. After the tasting, guests are rewarded with a much coveted Irish Whiskey Taster Certificate, as well as a complimentary glass of Jameson with a mixer of their choice.

Travel onwards to final destination of Kinsale and sample the culinary and scenic delights of this harbour town.

Accommodation: 4 Star Kinsale Hotel & Spa, Kinsale

Day 4 - Touring West Cork & Killarney National Park (Kinsale to Killarney)

Depart Kinsale and travel for a tour of Charles Fort, Franciscan friary of Timoleague, Clonakilty, Drombeg Stone Circle, Glandore, Union Hall, Bantry House & Gardens, Kenmare and Ladies View.

Depart Kinsale and Tour of **Charles Fort**. This star-shaped military fortress was constructed between 1677 and 1682, during the reign of King Charles II, to protect the town and harbour of Kinsale in County Cork. William Robinson, architect of the Royal Hospital in Kilmainham Dublin, and Superintendent of Fortifications, is credited with designing the fort. As one of the largest military forts in the country, Charles Fort has been associated with some of the most momentous events in Irish history. These include the Williamite War in 1690 and the Irish Civil War of 1922 - 23. Charles Fort remained garrisoned by the British army until 1922.



Tour of the **Franciscan friary of Timoleague** which was founded in the late-13th or early-14th century and today, extensive ruins remain in the village, which is located in County Cork, just 10km east of Clonakilty. Visitors can explore the long church, nave, transept, cloister and tower. They can also find a bullaun stone and fine windows. It's believed that either Donal Glas MacCarthy or William Barry founded the friary, which survived until it was burnt by English soldiers in 1642. Travel onwards to Clonakilty for a quick stop in this harbour town.



Travel to **Drombeg Stone Circle**, or as it is locally known as the Druid's Altar, which is located on the edge of a rocky terrace overlooking the sea about a kilometre away, in Glandore County Cork. This is a circle of 17 standing stones which on excavation showed that there had been an urn burial in the centre. It has been dated to between 153 BC and 127AD. Excavations in 1957 and 1958 revealed cremated bones in a deliberately broken pot wrapped with thick cloth and buried near the centre of the circle along with 80 other smashed sherds, four bits of a shale and a collection of sweepings from a pyre. After Drombeg travel onwards via the spectacular picturesque fishing villages of Glandore and Union League.



Travel onwards to tour **Bantry House & Gardens**, which is the ancestral home of the Earls of Bantry which is situated overlooking Bantry Bay in West Cork. The title lapsed in 1891 but the house is still owned and lived in by the direct descendants of the 1st Earl of Bantry. Since 1946 the House and Garden has been open to the public. The House has an important collection of art treasures mainly collected by the 2nd Earl of Bantry on his Grand Tour. The garden was inspired by travels of the 2nd Earl. It is laid out in the Italian style over seven terraces, with the house sitting on the third terrace. A Parterre facing south surrounding a wisteria circle which again surrounds a fountain was also created. From there rise the famous Hundred Steps, a monumental staircase built of local stone, set amidst azaleas and rhododendron.



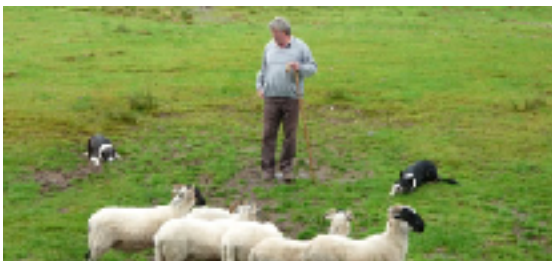


Travel onwards to the beautiful town of **Kenmare** on the Ring of Kerry. Nestling peacefully at the mouth of the Kenmare Bay is Kenmare one of Ireland's loveliest Heritage Towns. From its origins in 1678 the town of Kenmare, Co Kerry, was special. Kenmare is a haven of tranquillity, gourmet food, superb accommodation and breathtaking scenery, in one of the most natural, unspoilt environments in Europe. Tour Kenmare Art Gallery to see how this innovative gallery focuses on contemporary Irish art and, in particular, on the artists of the Beara Peninsula. Visit the Kenmare Lace and Design Centre which hosts an antique lace exhibition, lacemaking demonstrations, lace for sale, lacemaking materials and general haberdashery. Depart Kenmare and travel over the McGillicuddy Reeks Mountains and into **Killarney National Park**, with its 25,000 acres of woodland and magical mountains, with spectacular views of the Lakes of Killarney. Travel to **Ladies' View**, made famous by Queen Victoria's ladies in waiting in 1831, which has spectacular views of Killarney national park from its perch on the Ring of Kerry. Travel onwards to your final destination in Killarney.

Accommodation: 4 Star Arbutus Hotel, Killarney

Day 5 - Touring Ring of Kerry (Killarney)

Tour of the Ring of Kerry including sheep-dog demonstration at Caitins, including off the beaten track tour to Valentia Island, Kerry Cliffs and Skellig Michael, Waterville, Staigue Fort, Derrynane House, Sneem, Molls Gap, Killarney National Park, Muckross House & Gardens and Ross Castle.



Tour of the **sheep-dog demonstration at Caitins** which is one of the most unusual – and popular – sights on the Ring of Kerry. Local farmer Brendan Ferris will introduce you to his sheep dogs. In the distance, a flock of sheep can be seen widely dispersed on the side of the mountain behind him. Brendan then gives a fascinating demonstration of how sheep dogs are used to bring in the sheep on real farms. Responding to Brendan's whistled commands, the dogs guide the sheep downwards. Miraculously, by the end of the demonstration all the sheep are calmly gathered in a pen beside you.



Travel onwards off the beaten track of the Ring of Kerry to **Valentia Island**. The western part of the island is dominated by the barren, dramatic cliffs of Bray Head which command spectacular views of the Kerry coastline while the mild effect of the Gulf Stream results in Valentia's balmy climate and lush, colourful vegetation. Valentia was the eastern terminus of the first commercially viable transatlantic telegraph cable. This vast endeavour resulted in commercially viable transatlantic telegraph communications from Foilhommerum Bay to Heart's Content, Newfoundland in 1866. Transatlantic telegraph cables operated from Valentia Island for one hundred years. The Tetra pod footprints were found on the northern part of the island.

These magnificent imprints of history are thought to date from Devonian times between some 350 to 370 million years ago. An important quarry on the northern part of the island which opened in 1816 still flourishes today. The famous Valentia Slate has been used in many prominent buildings including the British House of Commons in London. View one of the Great Lighthouses of Ireland, Valentia Island Lighthouse on Cromwell Point was built on the site of a 17th century fort and has stood against sea and invader for hundreds of years.

Travel onwards via the spectacular **Kerry Cliffs**. The Kerry Cliffs offer spectacular views of the Skellig Islands and Puffin Island, over 1,000 feet (305 meters) high. The cliffs were formed over 400 million years ago. Located just 3km from Portmagee village, high above the wave lashed cliffs of Kerry Head at the most westerly point of the headland once stood two stone build forts, today all that survives is a stone wall a few feet high is with sheer 60ft cliffs behind them and acres of wild wind blow bog land in front. The Skelligs are world famous, each in its own right and recently were made even more famous on the big screen by the Star Wars Movie. **Skellig Michael** is known throughout the world of archaeology as the site of a well preserved monastic outpost of the early Christian period, now designated as a UNESCO World Heritage Site. Small Skellig is equally renowned in matters of ornithology as the home of some 27,000 pairs of gannets, the second largest colony of such sea birds in the world.



Travel onwards via **Waterville** to **Staigue Fort**. This one of the largest and finest ring forts you are likely to see in Ireland. The fort consists of a massive circular rampart surrounded by an external bank. The wall is up to



5.5m (18ft) high and 4m (13ft) thick, surrounding a circular area of 27.4m (90ft) in diameter. Staigue fort shows great skill and craftsmanship in the area of stone building. The technique of dry-walling so well demonstrated here has a long tradition in Ireland. The survival of so many early structures throughout the Irish countryside is partly due to the mastery of the craft of interlocking stones to achieve total stability, even in large building works like Staigue fort.

Travel onwards via the photographic Wild Atlantic way coastline to **Derrynane House**. This was the ancestral home of one of Ireland's most famous historical figures, Daniel O'Connell, lawyer, politician and statesman. Situated on 120 hectares of parklands on the scenic Kerry coast, the House displays many relics of O'Connell's life and career as a museum in his honour. The main street in Dublin, O'Connell Street is called after him. Derrynane National Historic Park, plantations and garden walks were laid out in the 18th and 19th Centuries, principally north and west of the house. Some features of the demesne are strongly associated with Daniel O'Connell, including the old summer house.



Travel onwards to the quaint little village of **Sneem** famously the home of the Casey Family of 7 brothers considered to have been the strongest and toughest family on earth. In 1982 the seven Casey brothers were inducted into the Irish Sports Hall of Fame, the only family ever to receive that honour. The list of Casey sporting achievements are many and varied. Paddy Casey was undefeated light and heavyweight wrestling champion of Ireland and also won many long-distance cycling races in Ireland. Dan Casey was a contractor, champion oarsman, and a tug-of-war champion. Jack Casey had remained in Ireland, married and had taken up farming and fishing. A superb oarsman in his own right, he helped the Caseys win the Salter cup in the Killarney Regatta. Tom Casey became British amateur champion in 1937 after only nine

days' training. Jim Casey won the Canadian and South American wrestling titles. Mick Casey in a career that lasted over twenty years, had 200 wrestling bouts and, of course, probably the greatest of them all, Steve 'Crusher' Casey became the supreme wrestler in the world and he retired undefeated as world wrestling champion. A statue stands in Sneem in his honour. Travel onwards over the Macgillycuddy's Reeks to **Molls gap**, an area and its shop is a panoramic spot visited by thousands of tourists each year. Moll's Gap is named for Moll Kissane who ran a shebeen, a small pub, on a rocky breach during the construction of the original Kenmare Killarney road in the 1820s. She became popular for selling home brewed poitin, whiskey, to the hardy men who worked on the road.



Travel to Killarney National Park on the shores of Muckross Lake to the 15th century tower house **Ross Castle**. It is a typical example of the stronghold of an Irish chieftain in the Middle Ages and is fully restored and furnished with period oak furniture. It is typical of its style, with square bartizans on diagonally opposite corners and a thick end wall containing a tier of chambers and winding stairs. **Muckross House & Gardens**, once visited by Queen Victoria, is situated on the shores of Muckross Lake within the stunning surroundings of Killarney National Park. This magnificent Victorian mansion is one of Ireland's leading stately homes. The elegantly furnished rooms portray the lifestyles of the landed gentry, while downstairs in the basement you can experience the working conditions of the servants employed in the House back in the day. Muckross House is also home to a number of skilled craftworkers, who can be seen using skills in the crafts of weaving, pottery and bookbinding. Many exotic trees and shrubs flourish in the mild climate and sheltered location of the Muckross gardens. Attractive features include a fine collection of rhododendrons and azaleas, an outstanding rock garden on a natural rock outcrop and beautiful tree-fringed lawns.

Accommodation: 4 Star Arbutus Hotel, Killarney

Day 6 - Touring Dingle Peninsula (Killarney to Tralee)

Touring Dingle Town (Dingle Crystal, Dingle Aquarium & Dingle Distillery), Sleah Head Ring (Beehive Huts, The Basket Centre, Gallurus Oratory & Kilmalkedar Church)



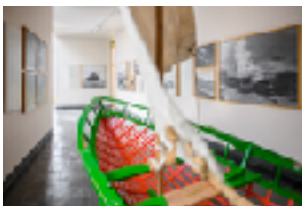
Travel to Dingle to firstly tour **Dingle Aquarium**. Gaze in wonder as you get up close and personal with the magnificent marine life inhabitants. Submerge yourself in the wonderful enchanted underwater world! Come face-to-face with the most fearsome creatures of the sea: sharks. Gain exclusive access to Sandtiger Sharks! Meet the delightful Polar Penguins and gets hands-on experience at the Touch Tank where you can stroke the friendly Rays and even hold a Starfish. Time allowing why not get up and close with the natural wildlife in Dingle Bay by going on a boat cruise.



Dingle Crystal are a family business specialising in hand-cut Irish crystal. Each piece is handmade by master craftsman Sean Daly at his workshop in Dingle, Co. Kerry. Sean's unique celtic designs are inspired by the rich heritage and breathtaking landscape of Ireland's west coast. All of our crystalware is designed, cut and polished by hand, using traditional techniques. With every step of the production process being carried out in

Ireland, Dingle Crystal is a true embodiment of Irish craft. No two pieces are exactly the same and each piece is personally signed by Sean. This is how Sean guarantees a unique and individual piece of Irish crystal to each of his customers. The **Dingle Whiskey Distillery** is not in the business of creating megabrands, nor do they distil for anyone else. Their scale is modest, their approach to what they make is essentially artisan and they have rekindled the tradition of independent distilling in Ireland. Two hundred years ago, this small island had over a hundred officially recognised distilleries; by the turn of this century there were two. The Dingle Distillery welcomes visitors to enjoy a tour of their facility where the entire production process, for all their products, are explained and a gin/vodka sample is provided. The distillery tour will give you an introduction into Irish whiskey and into the Dingle Distillery.

Depart Dingle and travel to tour the **Beehive Huts**, the most common surviving house type in Corca Dhuibhne during the Early Medieval period was the clochán (or Beehive Hut as known locally), a round house built using local stone, and roofed either in stone, using the corbelling technique. Many examples can be found in the Ceann Trá area, particularly near Sleá Head and they date from the 6th to the 10th or 11th centuries AD. These structures are found either singly, conjoined or three together. These were the houses in which people lived, be they of moderate or even high status, or monks within monasteries. Sometimes underground passages known as souterrains are found associated with them.



Travel onwards to the **Blasket Centre**. This is a fascinating heritage & cultural centre/museum honouring the unique community who lived on the remote Blasket Islands until their evacuation in 1953. The Centre details the community's struggle for existence, their language and culture, folklore & customs, and their extraordinary literary legacy – with classics such as 'The Islandman', 'Twenty Years A-Growing' and 'Peig'.



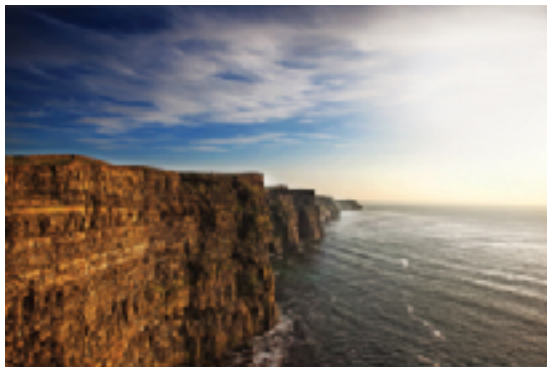
Travel onwards to **Gallarus Oratory**, which is the best preserved early Christian church in Ireland. Gallarus Oratory, was built between the seventh and eighth century and is the best preserved early Christian church in Ireland. It represents the apogee of dry-stone corbelling, using techniques first developed by Neolithic tomb makers. The stones were laid at a slight angle, lower on the outside than the inside to allow water to run off. Travel onwards to tour **Kilmalkedar**. Kilmalkedar is a spectacular early-Christian and medieval ecclesiastical site. The ruins are spread across an area of 10 acres. Among them, visitors will enjoy examining the fine 12th-century Hiberno-Romanesque church and several fascinating artefacts, such as an alphabet stone, holed Ogham stone, sundial and large stone cross.

Accommodation: 4 Star Ballyseede Castle Hotel, Tralee

Day 7 - Touring Cliffs of Moher & Burren (Tralee to Galway)

Touring Cliffs of Moher, traditional music town Doolin, The Burren Centre & Perfumery, Poulnbrone Portal Dolmen Tomb.

Travel onwards to Ireland's most visited natural attraction, the **Cliffs of Moher**. They stretch for 8km (5miles), as the crow flies, along the Atlantic coast of County Clare in the west of Ireland and reach 214m (702feet) at their highest point at Knockardakin just north of O'Brien's Tower. At the southern end of the Cliffs of Moher stands Hags Head a natural rocky promontory that resembles a seated woman when viewed from the north. In the ancient Gaelic language, the word Mothar means "ruined fort" and a 1st century BC fort stood where Moher tower now stands. Therefore the Cliffs of Moher means the cliffs of the ruined fort and although there is no trace remaining of this two thousand year old fort it has given name to the cliffs which are visited annually by almost one million visitors. The Cliffs of Moher Visitor Experience is located almost midway along these spectacular cliffs and is home to; an environmentally friendly visitor centre set into the hillside, O'Brien's Tower – a 19th century viewing tower, and 800metres of protected cliff side pathways, viewing areas and steps. Travel onwards to **Doolin Village** for lunch in one of the many traditional Irish musical pubs. Sample the great atmosphere in this village that is steeped in the history of traditional Irish music.



Discover the unique magic of this 'Bhoireann' or 'stony place' region in the **Burren Centre**. This visitor centre lies at the heart of the historic village of Kilfenora. It boasts a fantastic exhibition, an audio-visual theatre, local crafts shop and tea room. The audio visual film, narrated by famous environmentalist Eamon de Buitlear, traces the formation of the Burren 320 million years ago and explains why Alpine, Artic and Mediterranean plants grow side by side in this unique limestone world. Understand how ancient man left his mark on the landscape in the form of the Dolmen Tombs and burial chambers, which still stand today as stone sentinels to the Burren's heritage. Travel onwards to visit the famous **Poulnbrone Portel Dolmen Tomb**.

Accommodation: 4 Star Park House Hotel, Galway

Day 8 - Touring Galway City & Clonmacnoise (Galway to Dublin)

Travel to Galway City of Tribes for walking tour after dinner. Tour Shop Street, Quay Street and the Spanish Arch. Depart Galway and travel via Clonmacnoise to Dublin.



Travel to Galway City of Tribes for a Tour of the City. Strolling **Shop Street and Quay Street** is part of the Galway experience. Entertaining talented buskers and mimics, shops of all types, restaurants, cafes, pubs and people watching galore. Art and entertainment surround you as you explore these streets. The **Spanish Arch** was built in 1584, and is located on the banks of the river Corrib, and on the site more commonly known as Ceann na Bhalla (The Head of the Wall). It was originally an extension of the famous city walls, designed to protect the quays. In the past, it was known as The Blind Arch. Situated behind the famous **Spanish Arch**, Galway City Museum houses exhibitions which explore aspects of the history and heritage of Galway City. Ongoing exhibitions included Routes to the Past (Prehistoric Galway); Galway Within the Walls (Medieval Galway); Pádraic Ó Conaire: the Man and the Statue, The Galway Hooker and SeaScience. Among the Museum highlights are the Galway Civic Sword and Great Mace. The Civic Sword dates from the Charter of King James I in 1610, which granted authority for the carrying of such a weapon before the Mayor. The Great Mace, a massive piece of ornamental silverwork crafted in Dublin in 1710, was presented to the town by Edward Eyre, Mayor of Galway, in 1712.

Travel to one of the most famous monastic sites in Ireland, **Clonmacnoise** located along the River Shannon near the village of Shannonbridge, Co Offaly. It became a world-renowned centre for learning in the 9th century and was visited by Pope John Paul II. A walk amongst the peaceful stone ruins of this famous place will conjure images of the saints and scholars of Ireland's renowned Golden Age of learning. Founded by St Ciaran in the mid-6th century, it became a great centre of religion and learning, visited by scholars from all over the world. Many historical manuscripts, including the 11th century Annals of Tighernach and the 12th century Book of the Dun Cow, were written here. The beautifully preserved structures of Clonmacnoise Cathedral, Temple Doolin, Temple Hurpan and Temple Melaghlin will impress and leave those who visit Clonmacnoise with an authentic sense of the history of Ireland. Travel onwards to Dublin.



Accommodation: 4 Star Clayton Dublin Airport Hotel, Dublin

Day 9 - Depart Dublin Airport

Depart from Clayton hotel via complimentary airport shuttle bus to Dublin Airport.
